

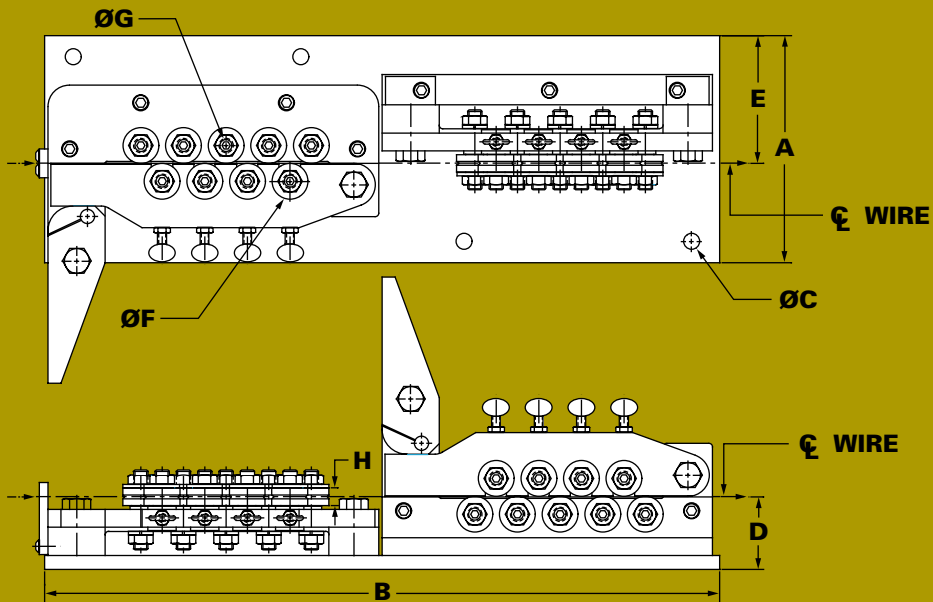
IS-507(9x9)

Ø .062"-.125" (1,57mm-3,17mm) for Wire
Ø .062"-.187" (1,57mm-4,74mm) for Cable

Inch Series Two-Plane Standard Roll Straighteners



IS-507 (9x9) is the same unit as the IS-507 (shown here) with 9 rolls on both the horizontal and vertical planes. Left and right hand models available.



Ø .062"-.125" (1,57mm-3,17mm) for Wire
Ø .062"-.187" (1,57mm-4,74mm) for Cable

	A	B	C	D	E	F	G	H	lbs.
18 (9 Horz. x 9 Vert.)	8.00"	23.75"	.562"	2.56"	4.50"	1.259"	.472"	.625"	TBD