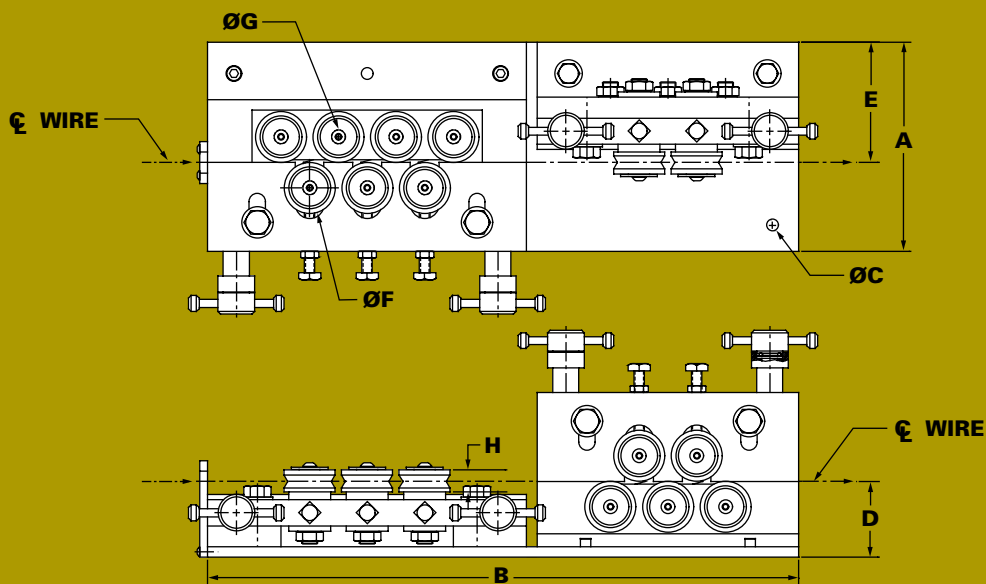
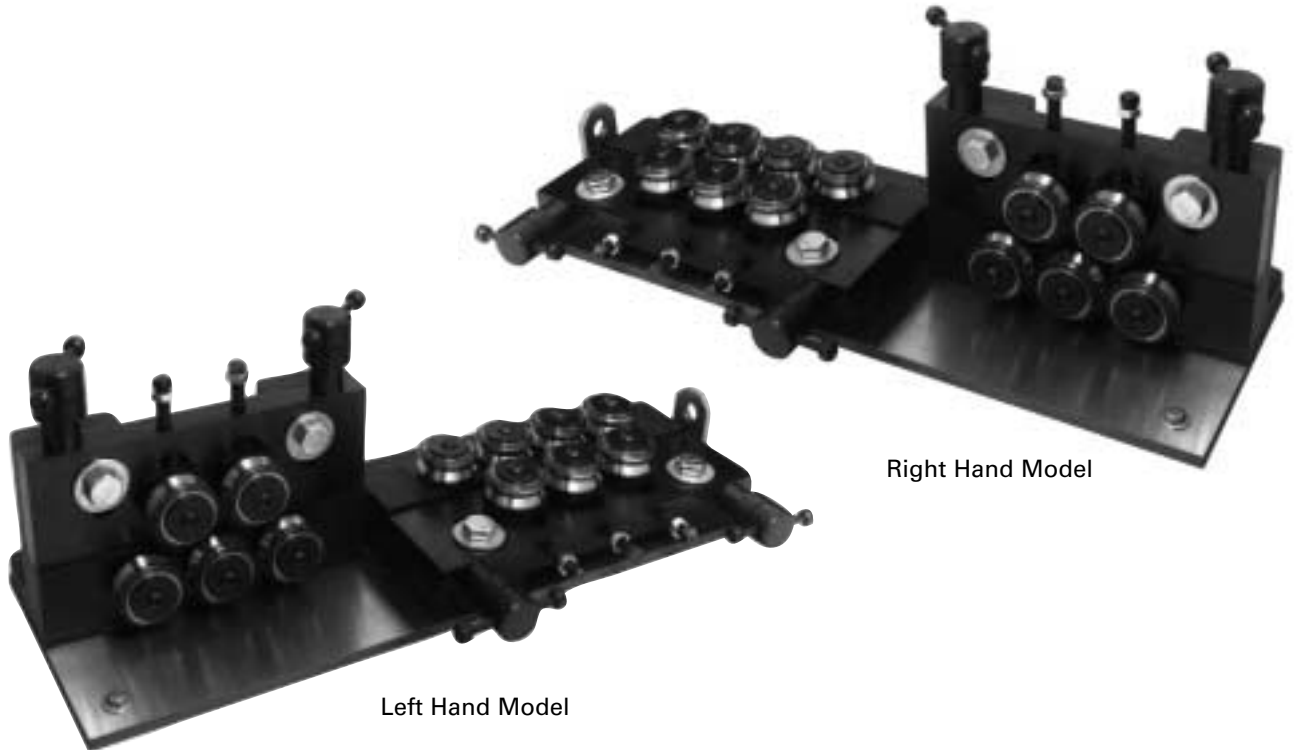



Ø .250"-.375" (6,35mm-9,525mm) for Wire
Ø .250"-.500" (6,35mm-12,7mm) for Cable

Inch Series Two-Plane Standard Roll Straighteners



Ø .250"-.375" (6,35mm-9,525mm) for Wire
Ø .250"-.500" (6,35mm-12,7mm) for Cable

	A	B	D	E	F	G	H	lbs.
12 (7 Horz. x 5 Vert.)	10.00"	28.25"	3.62"	.575"	2.438"	.669"	1.054"	180